

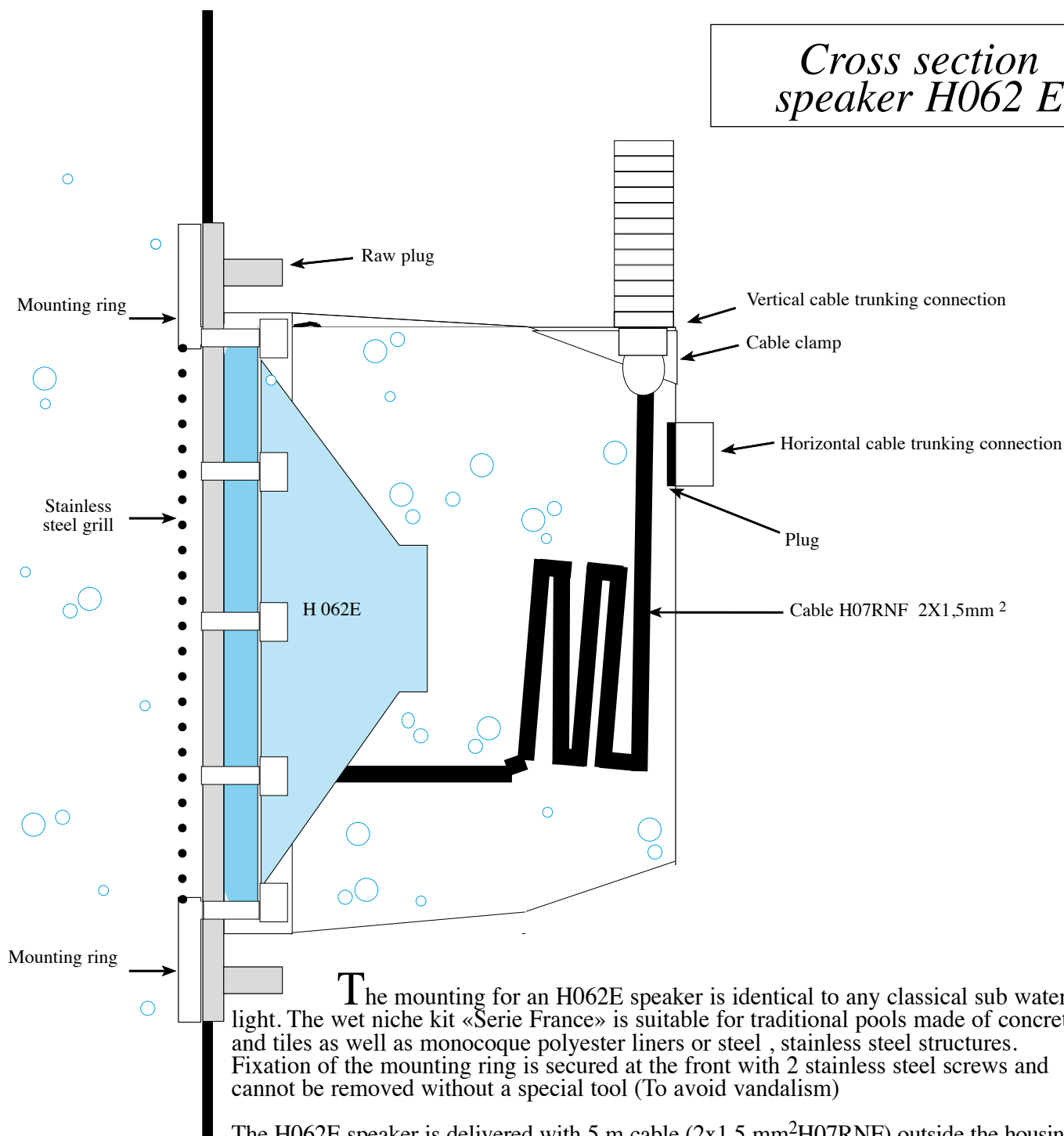
## *Technical book documentation*

*Why ? What is the use ? During his evolution , mankind has enlarged his musical surroundings with melodies and created musical instruments that are more and more sophisticated and varied, from reed pipes to digital synthesisers.*

*What Aqua-Musique offers is not the ability to modify the music but the way you listen to it , by using the body as a receiver.*

*Your body can sense music under water as it is 75 % liquid. Immersed in the pool our body vibrates. Water propagates the acoustic waves and amplifies the perception of the music through the body. The extraordinary symbiosis between water and music brings a feeling of immediate and total relaxation.*

## Cross section speaker H062 E

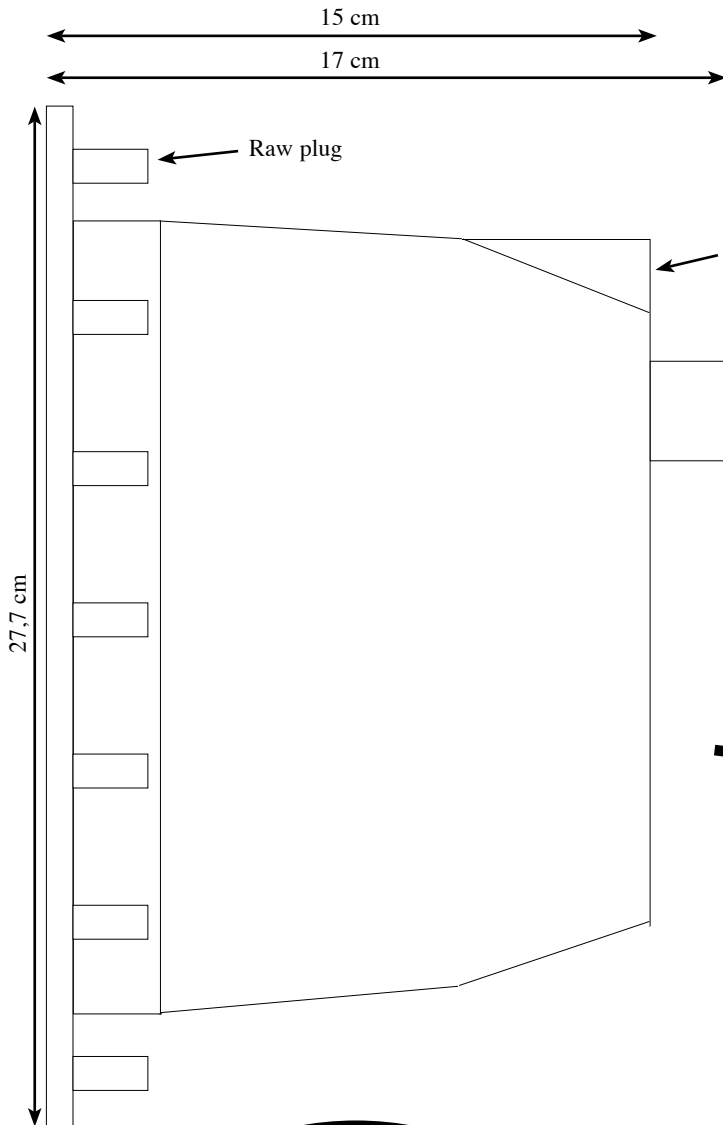


The mounting for an H062E speaker is identical to any classical sub water light. The wet niche kit «Serie France» is suitable for traditional pools made of concrete and tiles as well as monocoque polyester liners or steel , stainless steel structures. Fixation of the mounting ring is secured at the front with 2 stainless steel screws and cannot be removed without a special tool (To avoid vandalism)

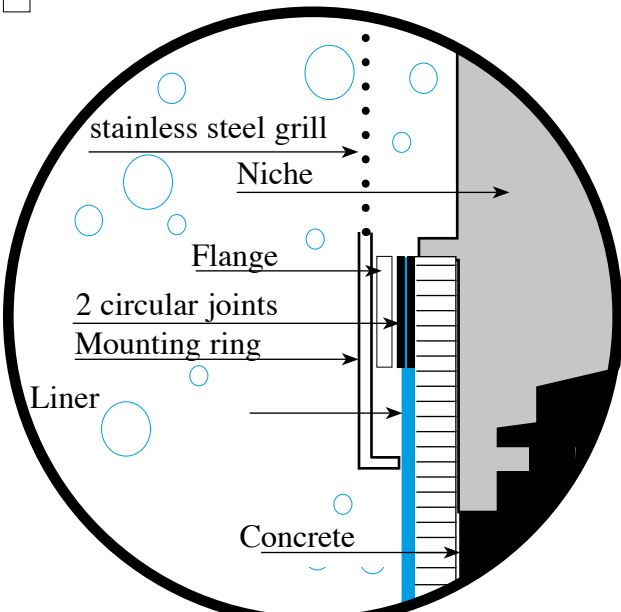
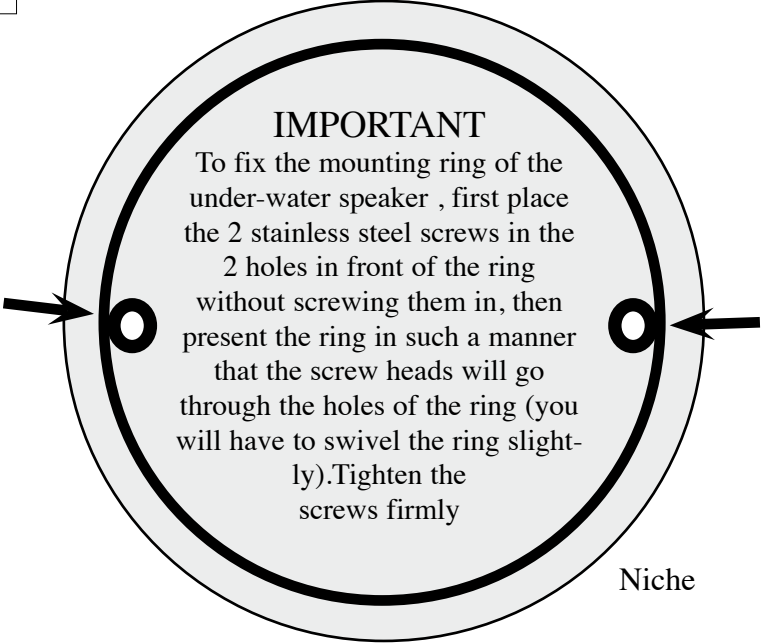
The H062E speaker is delivered with 5 m cable (2x1,5 mm<sup>2</sup>H07RNF) outside the housing. You will need to install a dry connection box nearby to complete the connection to the amplifier with a classic loudspeaker cable. do not use stiff or semi stiff cables.

A fast-blowing fuse box type A2 is delivered with the H062E to be connected to the output HP of the Hi-Fi system. (If a power limitation device like «Limiteur» or «Translimiteur» is supplied, there is no need for a fuse box).

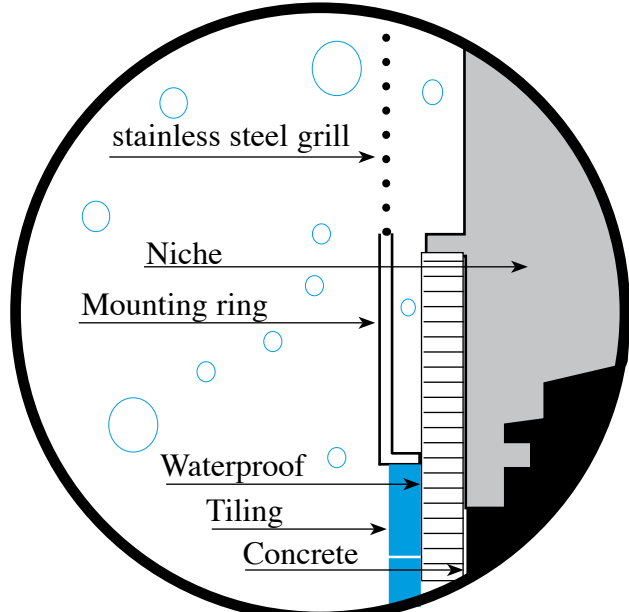
If the length of the cable between the amplifier and the built-in speaker is over 60 meters, you will need to install a «100 volts cable» equipped with an impedance transformer. (Please call us)



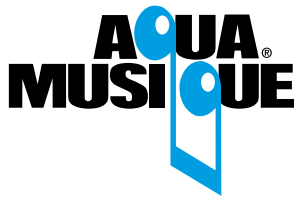
*Wet niche for H062 E*



Built in for **LINER** type



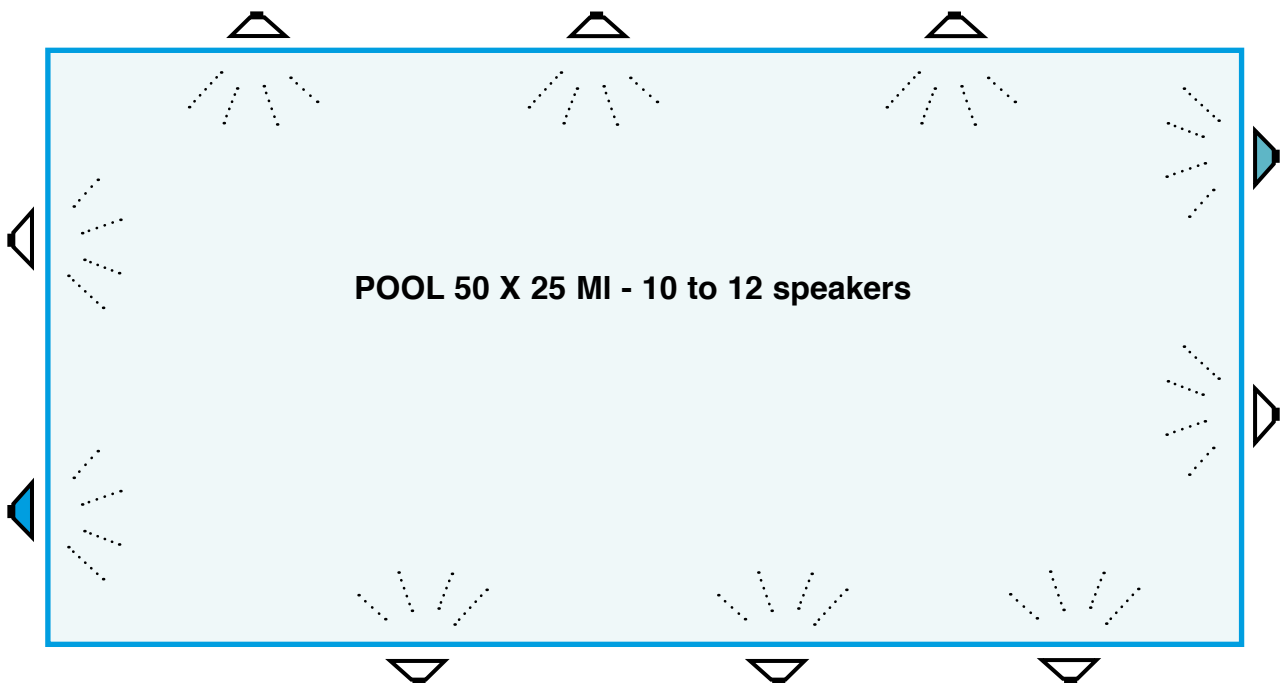
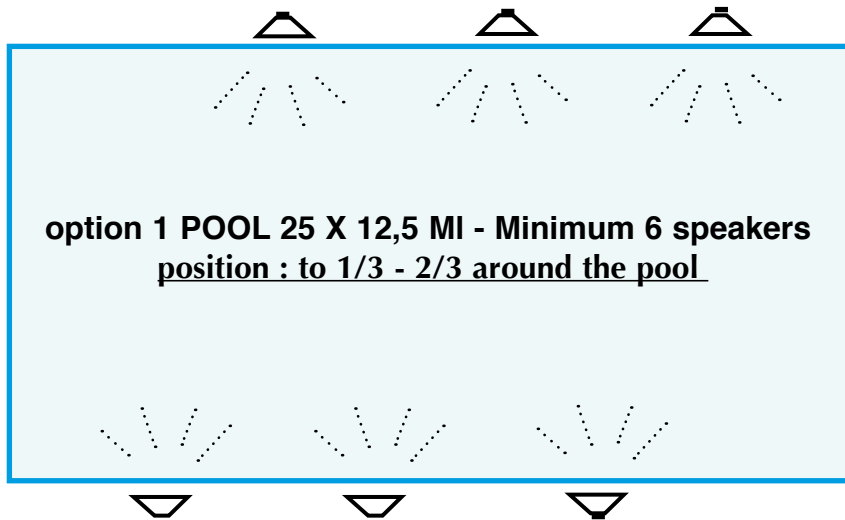
Built in for **TILING** type

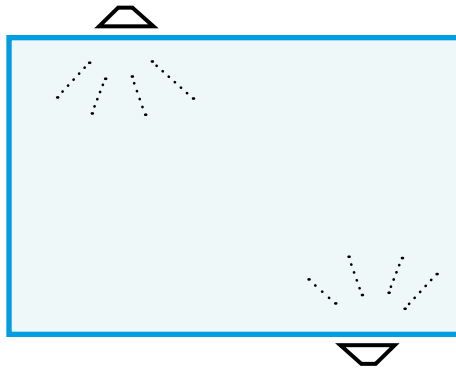


## PUBLIC POOLS & COMMUNITY POOLS

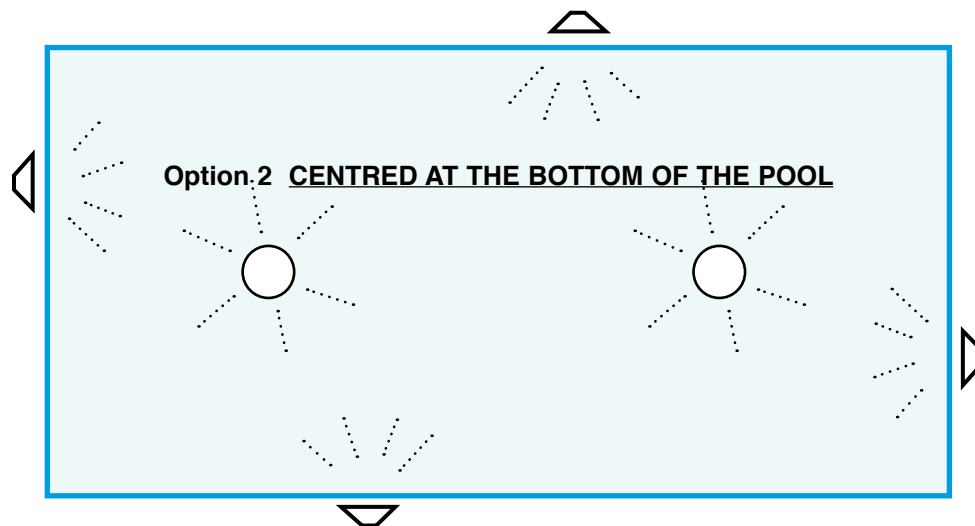
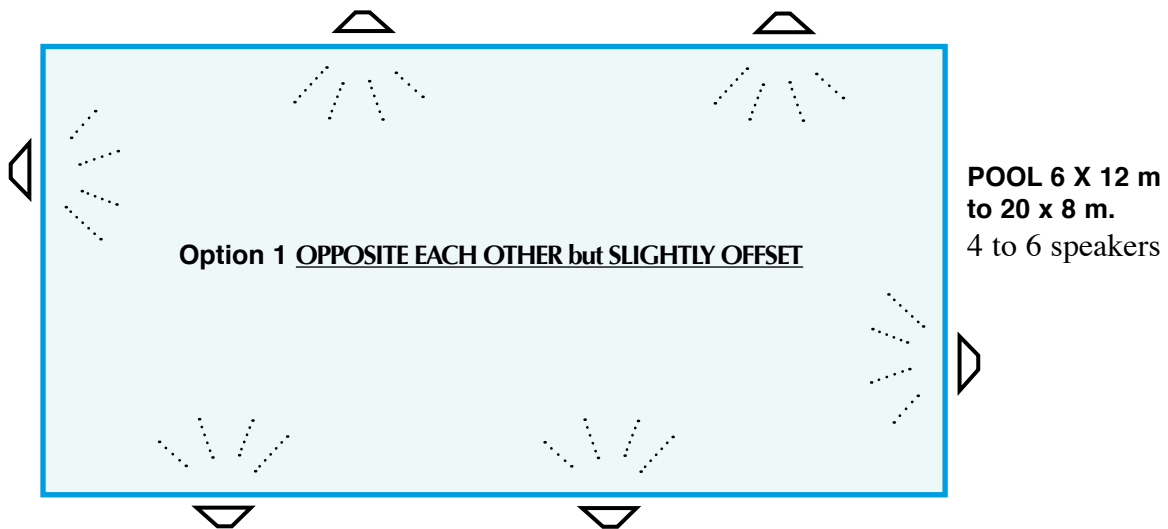
EXAMPLES OF LAYOUT FOR BUILT-IN UNDER-WATER SPEAKERS H 062E

*Recommended depth, 70 cm from the pool surface.*





Average pool 4 X 6 ml  
to 5 x 8 ml maximum.  
Minimum 2 speakers



From 5 X 8 ml to 6 x 12 ml , you need to install 4 to 6 speakers.  
You can also position the mobile speakers at the bottom in the centre of the pool. This is a very good position for shallow pools. For built-in speakers, we think that it is as well the best solution.

For any other type of pools, please call us.

# AQUA<sup>®</sup> MUSIQUE



*Supplier  
to the French  
Federation  
of Swimming*

[info@aquamusique.com](mailto:info@aquamusique.com)

0033 612 550 437

0034 660 689 389